



GEF-Satoyama  
Project



# GEF-SATOYAMA PROJECT

COMDEKS Global Workshop  
San Jose, Costa Rica

Devon Dublin, PhD

Project Coordinator

GEF - Satoyama Project

CONSERVATION  
INTERNATIONAL



PHOTO BY CI/YOJI NATORI



# GEF-SATOYAMA PROJECT

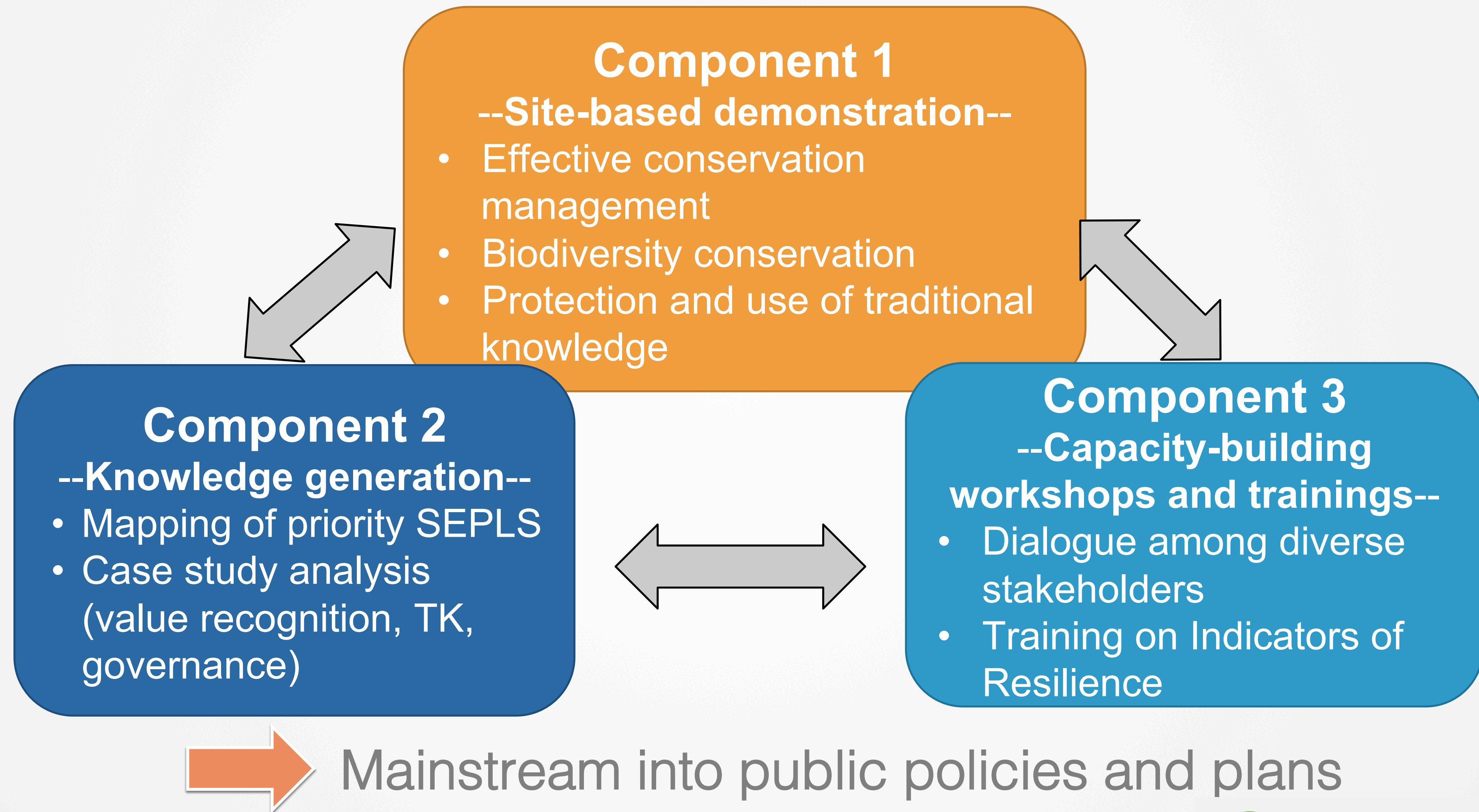
**Mainstreaming biodiversity conservation and sustainable management in priority Socio-ecological Production Landscapes and Seascapes**

- ❑ **Project Vision:** Society in harmony with nature, with sustainable primary production sector based on traditional and modern wisdom, and making significant contributions to global targets for conservation of biological diversity
- ❑ **Project Objective:** To mainstream conservation and sustainable use of biodiversity and ecosystem services, while improving human well-being in priority Socio-Ecological Production Landscapes and Seascapes



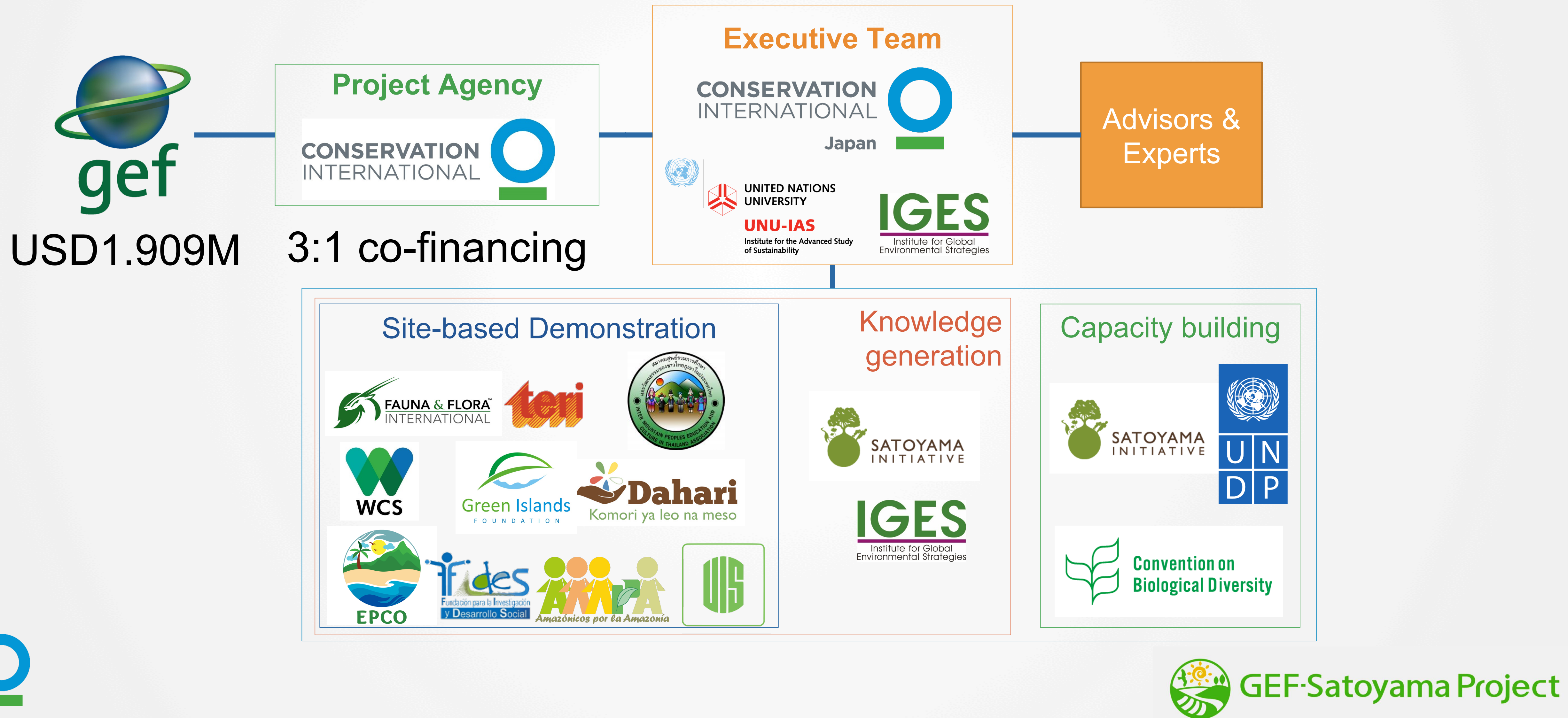
GEF-Satoyama Project

# PROJECT COMPONENT





# INSTITUTIONAL ARRANGEMENT





# SUSTAINABLE DEVELOPMENT GOALS (SDGs)



☐ Specifically addressed

☐ Indirectly addressed



GEF-Satoyama Project



# CALL FOR PROPOSALS

- Indo-Burma: 63 proposals
- Madagascar and Indian Ocean Islands: 29 proposals
- Tropical Andes: 38 proposals





# 10 SITE-BASED PROJECTS

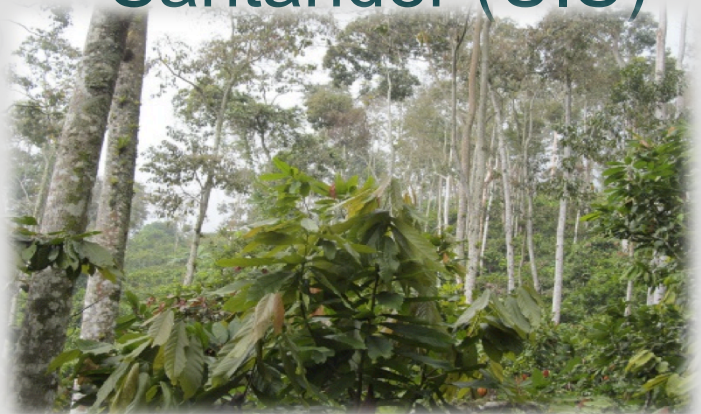


The Energy and Resources Institute (TERI)



Inter Mountain Peoples' Education and Culture in Thailand Association (IMPECT)

Universidad Industrial de Santander (UIS)



Green Island Foundation (GIF)



Fauna & Flora International (FFI)



Wildlife Conservation Society (WCS)



Environnemental Protection & Conservation Organisation (EPCO)

Fundación para la Investigación y Desarrollo Social (FIDES)



Asociación Amazónicas por la Amazonía (AMPA)



GEF-Satoyama Project



# <http://gef-satoyama.net/>



[HOME](#)

[PROJECT COMPONENTS](#)

[SUBGRANT PROJECTS](#)

[RESOURCES](#)

## GEF-Satoyama Project

### Mainstreaming Biodiversity Conservation and Sustainable Management in Priority Socio-ecological Production Landscapes and Seascapes

"GEF-Satoyama Project" aims to achieve societies in harmony with nature, with sustainable primary production sector based on traditional and modern wisdom, and making significant contributions to global targets for conservation of biological diversity.

While protecting pristine natural areas and other high conservation value areas continue to be important, global conservation of biodiversity will not be achieved without the sustainable management of areas in which people and nature interact. Production landscapes and seascapes refer to the space in which primary industry activities (agriculture, forestry and fisheries) take place in general. Among the production landscapes and seascapes, those that integrate the values of biodiversity and social aspects harmoniously with production activities, such that production activities support biodiversity and vice versa, are termed the socio-ecological production landscapes and seascapes (SEPLS), the focus of this project. This project intends to address the barriers that SEPLS faces globally, such as insufficient recognition of their values and dynamic nature and weak governance, and contribute to the achievement of multiple Aichi Biodiversity Targets and Sustainable Development Goals.

The GEF-Satoyama Project is funded by the Global Environment Facility (GEF), implemented by Conservation International's CI-GEF Project Agency and executed by Conservation International Japan in cooperation with the United Nations University Institute for the Advanced Study of Sustainability (UNU-IAS, the Secretariat of the International Partnership for the Satoyama Initiative) and Institute for Global Environmental Strategies (IGES).

#### NEWS

- 2016.12.12 [First Quarterly Newsletter of the GEF-Satoyama Project has been released](#)
- 2016.09.07 [Indicators of Resilience Training in Tropical Andes Biodiversity Hotspot](#)
- 2016.09.02 [Indicators of Resilience training at IUCN World Conservation Congress](#)

[▲ Archives](#)

[▲ PageTop](#)



© 2017 Conservation International

[ABOUT US](#)

[CONTACT](#)

[PRIVACY POLICY](#)

[TERMS OF USE](#)



GEF-Satoyama Project



# INDICATORS OF RESILIENCE TRAINING



Indo-Burma (Chiang Mai, Thailand)



IUCN WCC (Hawaii, USA)



Tropical Andes (Puerto Lopez, Ecuador)



Madagascar and Indian Ocean Islands ( Moramanga, Madagascar)



GEF-Satoyama Project



# QUARTERLY NEWSLETTER



CONSERVATION  
INTERNATIONAL  
Japan



GEF-Satoyama Project Quarterly Newsletter Issue 17-01



GEF-Satoyama  
Project

QUARTERLY  
NEWSLETTER

JULY - SEPTEMBER, 2016

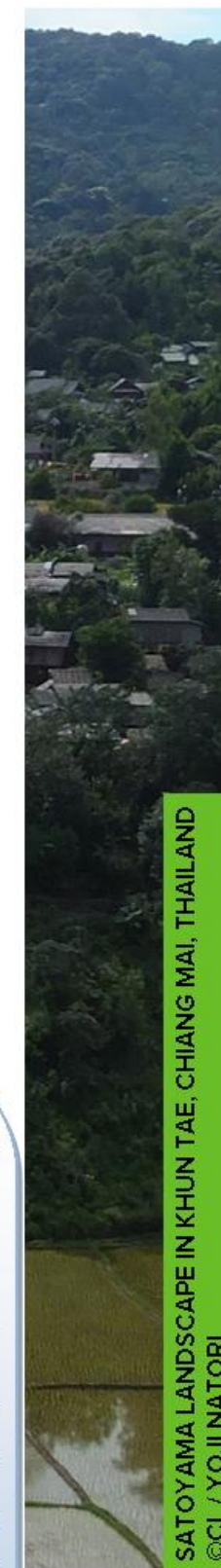
“GEF-Satoyama Project” aims to achieve societies in harmony with nature, with sustainable primary production sector based on traditional and modern wisdom, and to make significant contributions to global targets for conservation of biological diversity.

**Project Duration:** September 1, 2015 - June 30, 2019

**GEF Project Agency:** Conservation International

**Executive Team:** Conservation International Japan (CI Japan) as Executing Agency, with United Nations University Institute for the Advanced Study of Sustainability (UNU-IAS) and Institute for Global Environmental Strategies (IGES)

**Funding:** GEF: USD1,909,000 / Co-financing: USD6,350,000



SATOYAMA LANDSCAPE IN KHUN TAE, CHIANG MAI, THAILAND  
©CI / YOJINATORI



GEF-Satoyama Project



# EXPANSION OF THE IPSI NETWORK

## IPSI Members Prior to Start of the GEF-Satoyama Project

- FIDES (Ecuador)



- IMPECT (Thailand)



## Became IPSI Members after being aware of it through the GEF-Satoyama Project's Calls for Proposals

- Dahari (Comoros)



- GIF (Seychelles)



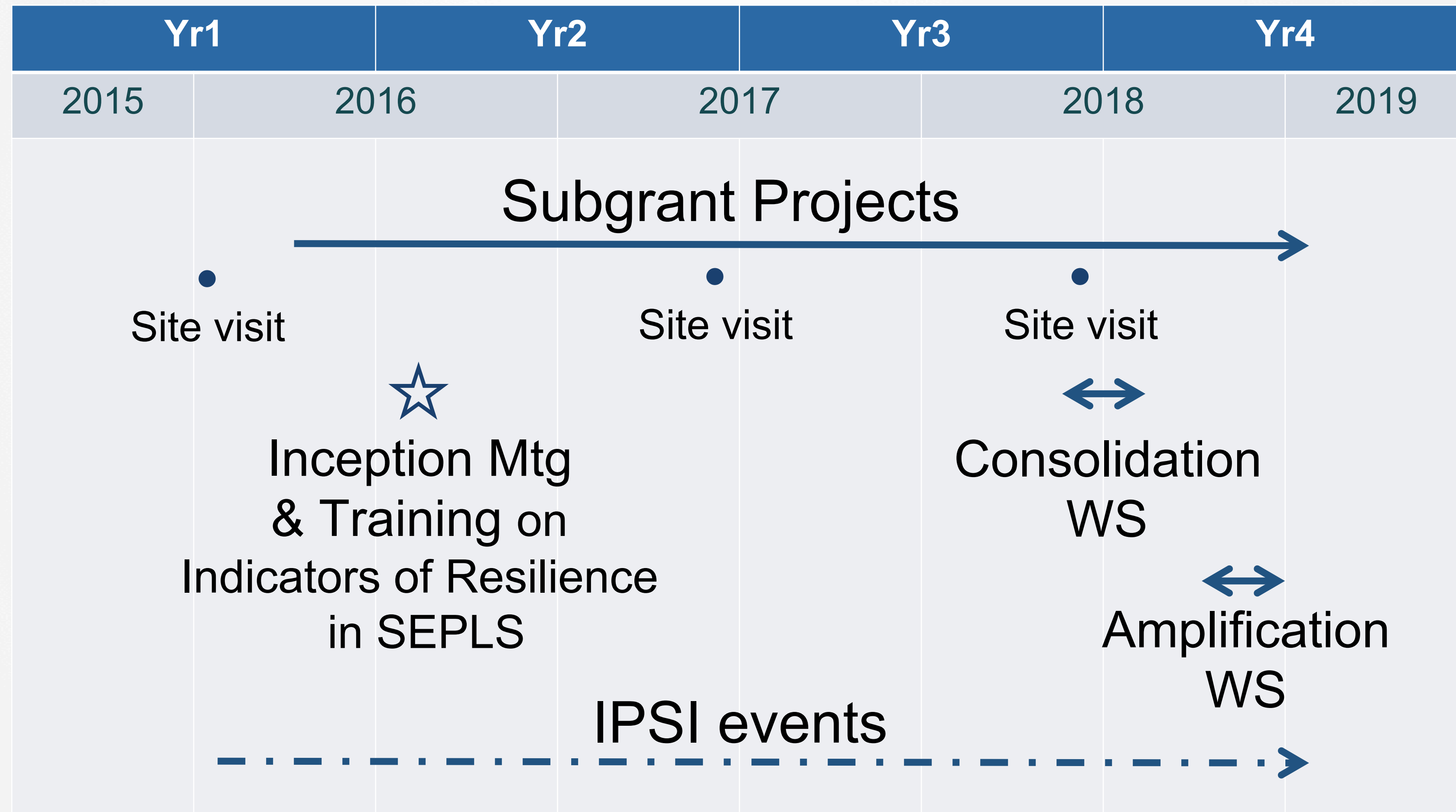
- Ny Tanintsika (Madagascar)



GEF-Satoyama Project



# PROJECT SCHEDULE





# BEYOND THE PROJECT

- Successful cases and knowledge products that others can reference and use
- Scaling up at local and global levels
- Stimulating the mobilization of resources to/for SEPLS







# Thank you!

[ddublin@conservation.org](mailto:ddublin@conservation.org)

