

# Monitoring and Evaluation: Adaptive Management for Landscape Resilience

**Diana Salvemini, COMDEKS Project Manager (UNDP-GEF)**  
COMDEKS Global Knowledge Exchange Workshop, Jan 23-26  
San José, Costa Rica



# Monitoring and Evaluation: Outline

## A. Setting the Scene

- i. Purpose: Capturing results and adaptive management
- ii. Monitoring - identifying results
- iii. Evaluation – analyzing results

## B. COMDEKS Programme: an Integrated Results Based Management System

- A. Global Level
- B. Country Programme/Landscape level
- C. Project Level

## C. Results-based Management: Tools & Tips

- a) Adaptive Management
- b) Resilience Indicators Toolkit
- c) Forthcoming Terminal Evaluation

## D. SGP Upgrading Country Programmes - M&E Milestones and Requirements

## E. Case study: Best practices from SGP Ecuador

## Two Integrated Objectives:

- **Capture results**
  - To *measure the effectiveness of COMDEKS/SGP* implementation at project, Country Programme and Global Programme levels
  - Report to donor re impacts; cost effectiveness
  - Produce knowledge of what works and doesn't work (lessons, good practice)
- **Adaptive management**
  - To provide a methodical approach to *adaptive management* at project, Country Programme and Global Programme levels
  - Ensure project is on track and adjust as needed
  - Build capacities of implementation teams at all levels
  - Strengthen responsibility and ownership by communities, NSCs, et al

# Monitoring – identifying results

- An **observation system** for project managers to verify whether project activities are happening according to plan and whether means are used in a correct and efficient manner.
- The system must supply project management with information **throughout the course of the project** to make it possible to take the right decisions.
- Monitoring is limited to the **relation** between the implementation of the activities and the results.



# What is project monitoring?

## *The continuous measurement of project results*

- Asks the main question: *Is the project making a difference?*
- Indicates *project progress* toward Outcomes and Objective
- Requires the project team to *collect information* about *project results*, and to *analyze and validate these results*
- Serves as the *basis for project reporting*, and involves...
  - Measuring the values of all Outcome indicators at project start ('Baseline')
  - Tracking progress against the targets in the Logical Framework / Results Framework ('LogFrame')
  - Conducting regular field visits
  - Systematically collecting indicator measurements from project sites
  - Conducting regular progress reviews and presentations to the Project Board
  - Facilitating, analyzing and following up on external M&E (Midterm Review and Terminal Evaluation)



# Evaluation – analysing results

- A systematic method for **collecting, analyzing, and using information** to answer questions about projects, policies and programs particularly about their effectiveness and efficiency.
- **Period and time bound** – periodic feedback
- Responsibility of evaluator together with staff and management

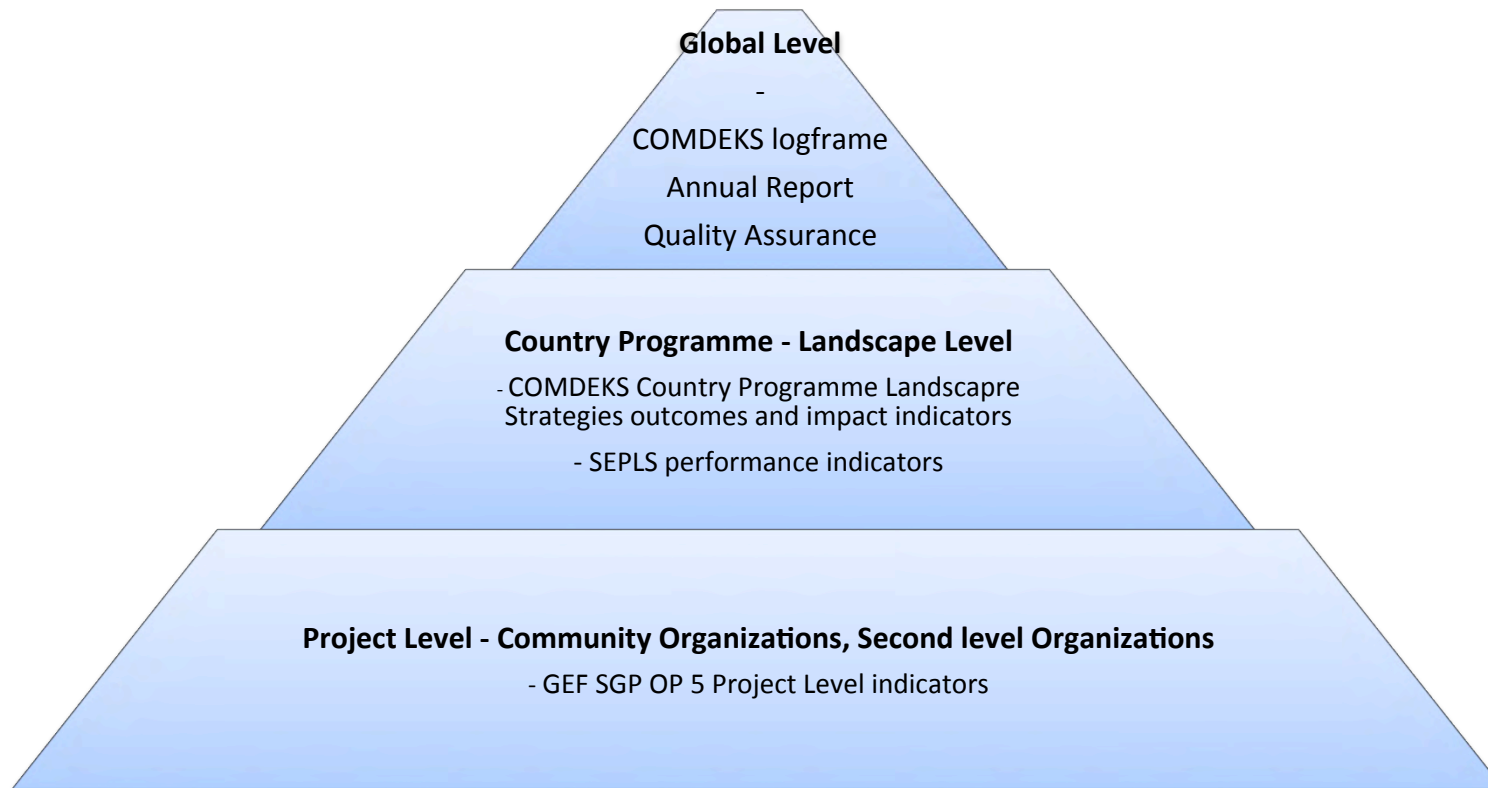


# COMDEKS Programme: an Integrated Results Based Management System

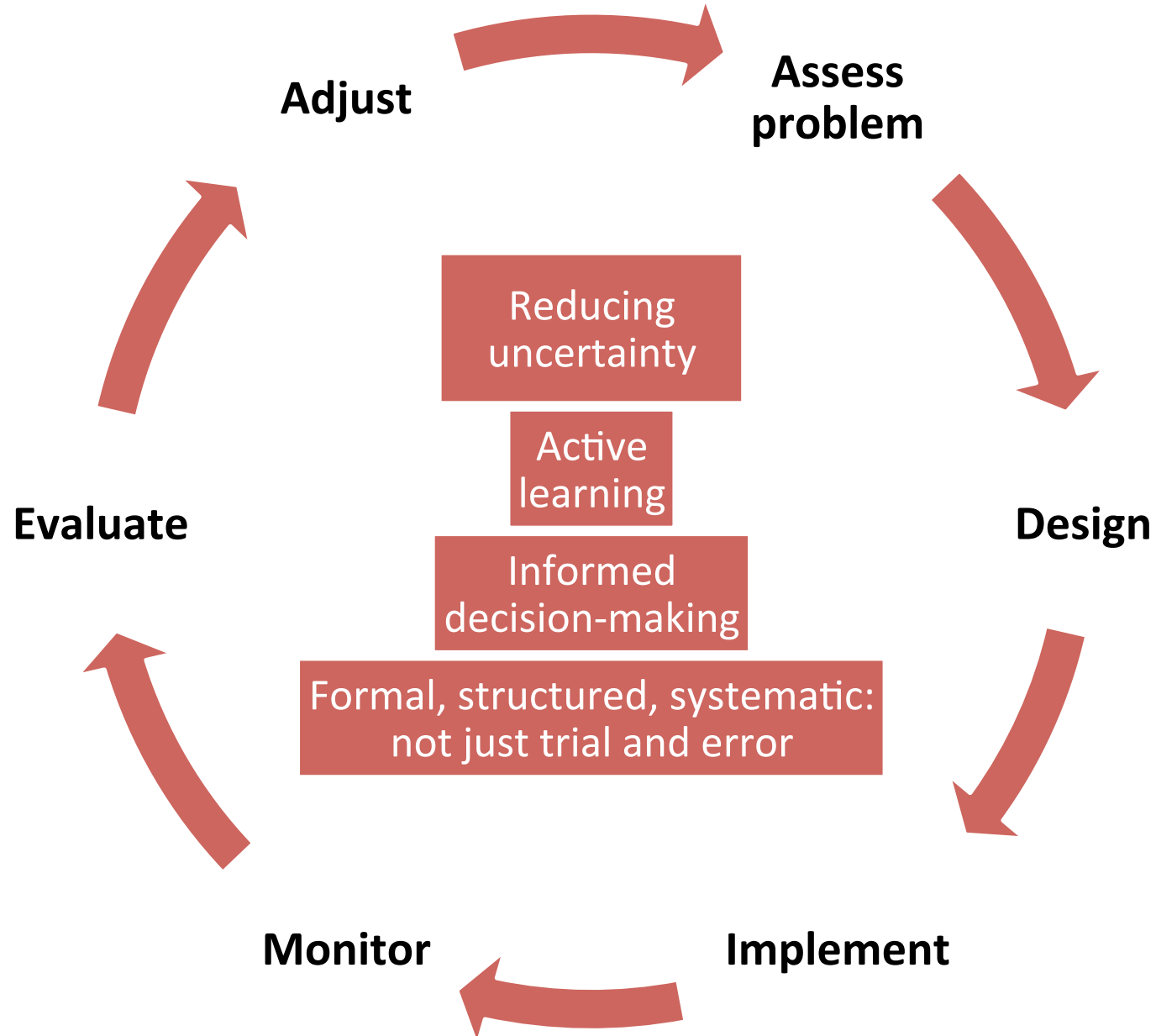


Empowered lives.  
Resilient nations.

## Integrated RBMS: three levels



# Adaptive Management



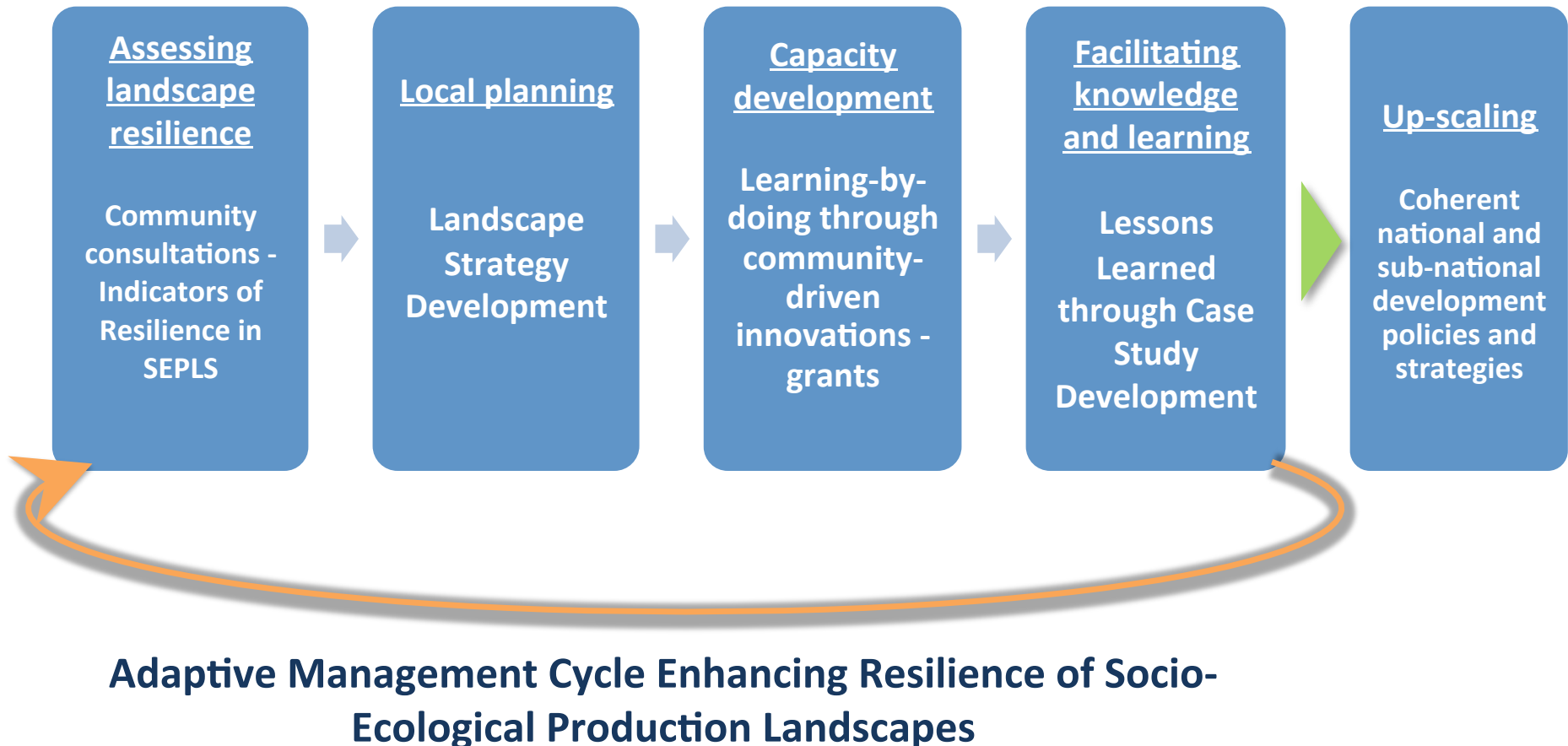


# COMDEKS Strategic Framework:

## Adaptive management to enhance community resilience and sustainability at landscape level



Empowered lives.  
Resilient nations.



# Resilience Indicators: A Tool for Landscape Assessments

- **Indicators of Resilience in SEPLS:** ongoing collaboration between UNDP, UNU-IAS, Bioversity International, and IGES.
- Participatory tool
- The indicators are **being applied and tested** in COMDEKS project sites to help measure and understand **socio and ecological resilience** of target landscapes and seascapes

➤ **Resilience Indicator Toolkit (launched during WPC in Sydney)**



# Piloting SEPLS Indicators: lessons learned

- ✓ **Well received by participants**; successfully engaged stakeholders in assessing the status of their selected socio-ecological landscape linking socio-economic and ecological aspects.
- ✓ Hand in hand with **site and stakeholder scoping exercises**, perceived as a good opportunity to identify community priorities, current state of the environment and socio-economic conditions and perceived threats and solutions.
- ✓ Effective tool for reaching a common understanding and defining **resilience strengthening strategies**.
- ✓ Importance of **tailoring language** and training content to meet capacity needs of participants.
- ✓ The interactive **mapping exercise** and the **use of photos** of the landscape proved to be particularly successful in providing a spatial dimension to conservation priorities and encouraging relevant and practical solutions to landscape resilience.
- ✓ Key role of the **facilitator**, and importance to engage local government authorities.
- ✓ Importance to integrate **gender perspectives** in the community consultation and application of the indicators.
- ✓ Room for improvement (addressed in the second edition): scoring system; strengthening **social indicators**.

Forthcoming: Spring/Summer 2017

# SGP Upgrading Country Programmes – M&E Milestones and Requirements

- 1) Inception Workshop
- 2) Project Implementation Review (PIR) + **AMR Process**
- 3) Midterm Review
- 4) Terminal Evaluation
- 5) GEF Tracking Tools (**new requirement for UCPs**)
- 6) SESP (Safeguards)
- 7) Gender Analysis





# Case Study from SGP Ecuador

## Monitoring and Evaluation System SIMONAA - OP6



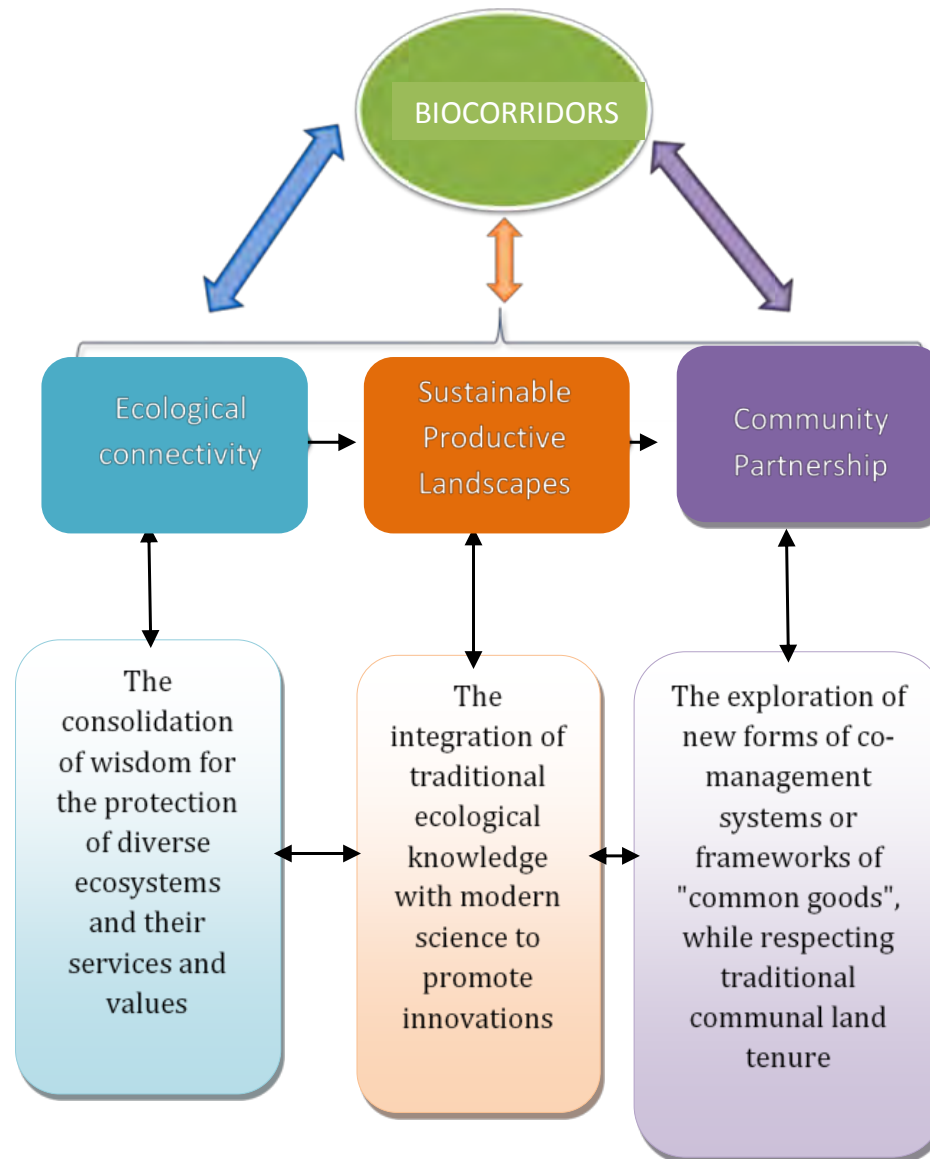


# Objective

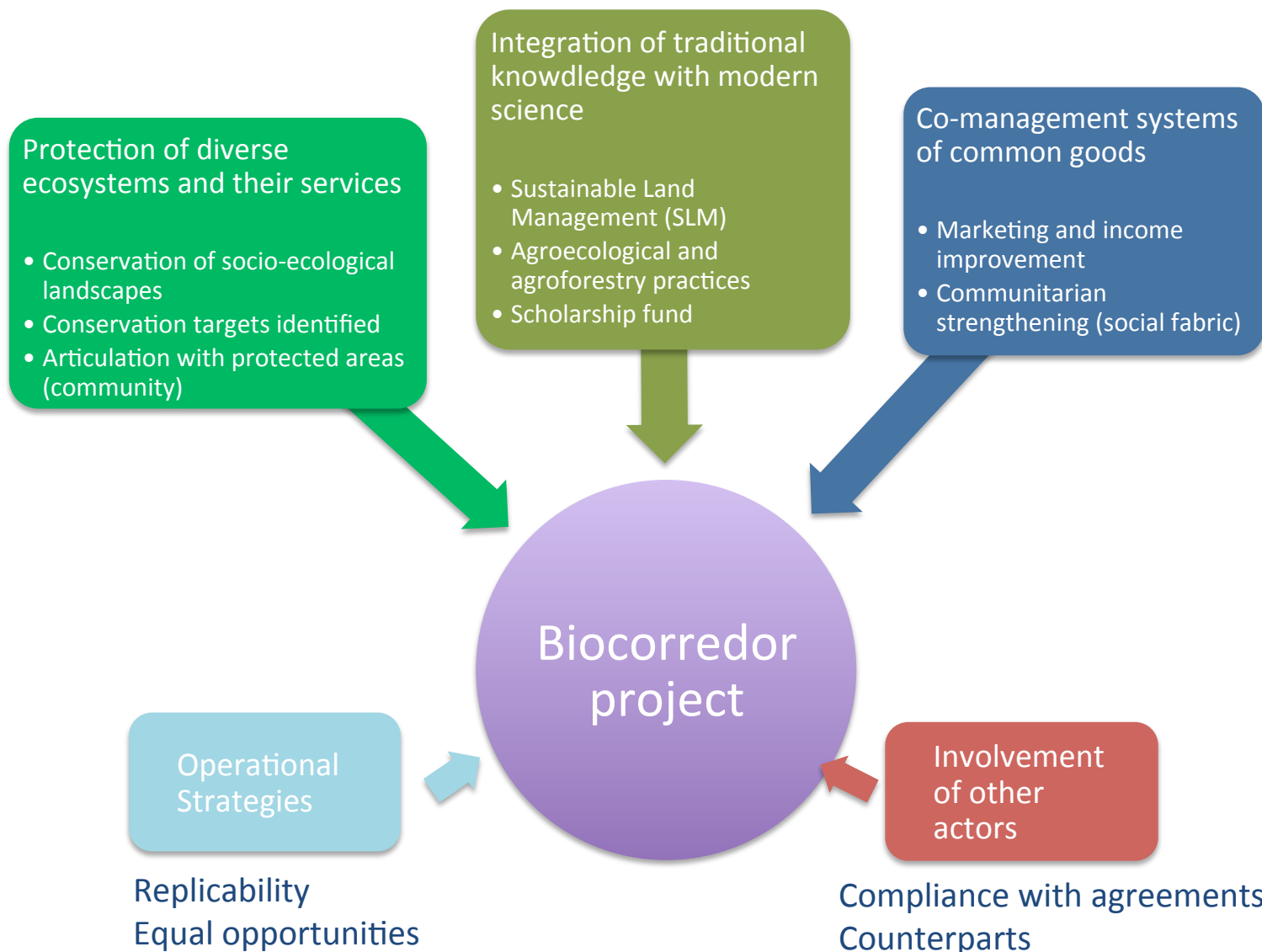
To show in a transparent and continuous way the level of performance, efficiency and progress of the projects by biocorredor, recovering the good practices and visions of the communities



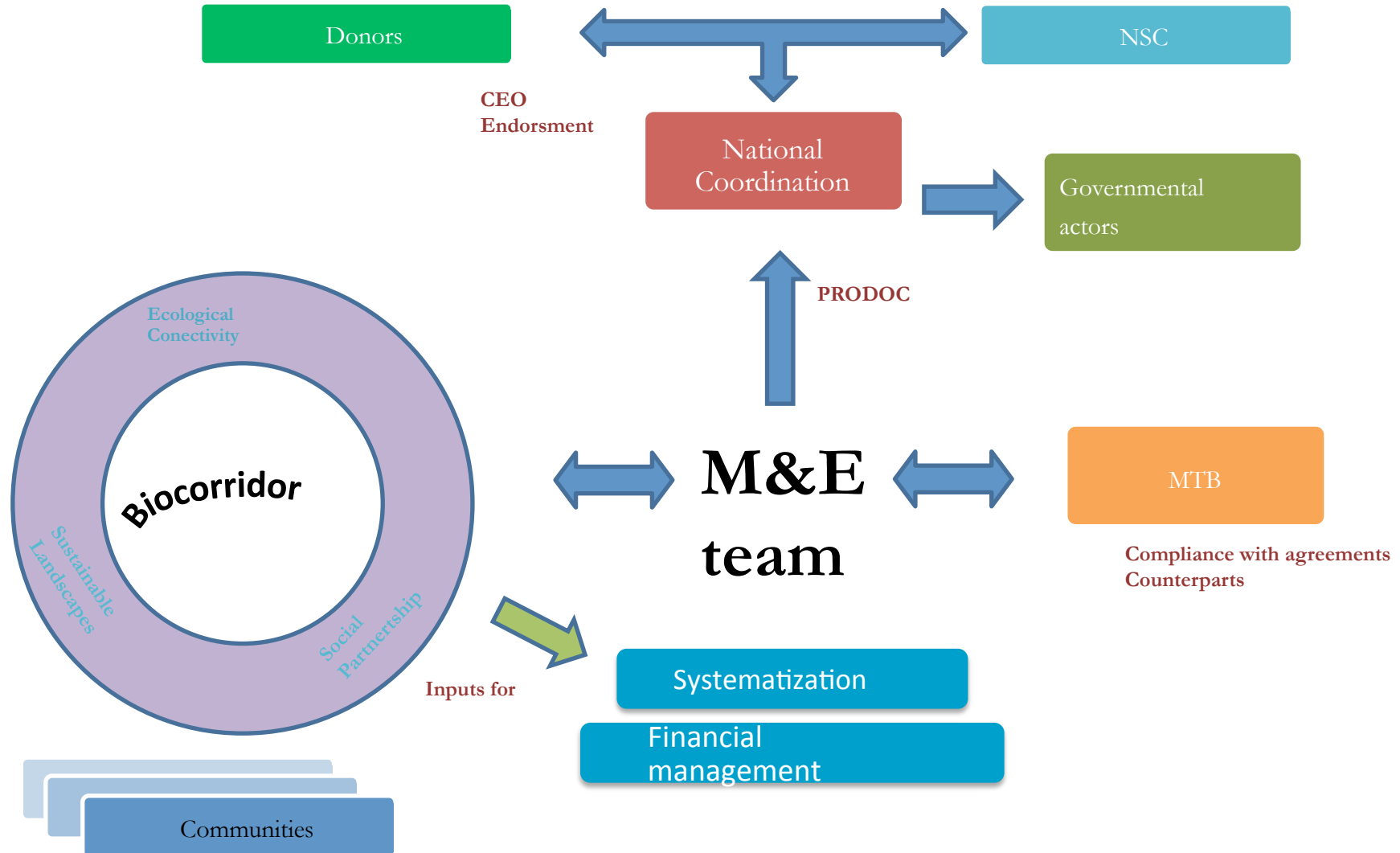
# Conceptual Framework for Biocorridors for Living Well



# Implementation approaches



# Reporting scheme







# THANK YOU!

For more information, visit  
[www.comdeksproject.com](http://www.comdeksproject.com)

Contact person: [diana.salvemini@undp.org](mailto:diana.salvemini@undp.org)



*Empowered lives.  
Resilient nations.*